

May
LIGHT
ETERNAL
shine upon
our *SISTER*
O LORD

S. IRENE D.

Sister Lucille Wies
born on
May 4, 1920 in Petersburg, Nebraska

Received into the School Sisters of St. Francis
on June 13, 1951

Perpetual Profession of Vows
on June 21, 1959

Born to Eternal Life on Sunday, January 10, 2021
at Our Lady of the Angels, Greenfield, Wisconsin

Memorial Mass
Thursday, February 11, 2021, 4:00 p.m.
St. Joseph Convent Chapel, Milwaukee, Wisconsin

Interment
Sisters' Cemetery, Campbellsport, Wisconsin

Places of Ministry

St. John the Baptist School, Johnsburg, Wisconsin
St. Joseph School, Aurora, Illinois
Ss. Peter & Paul School, Clear Creek, Iowa
St. Ludger School, Creighton, Nebraska
St. Boniface School, Westphalia, Iowa
St. John the Baptist School, Petersburg, Nebraska
St. Joseph Convent, Campbellsport, Wisconsin

Ministry of Prayer and Presence

SJC Motherhouse, Milwaukee, Wisconsin
Our Lady of the Angels, Greenfield, Wisconsin

Memorial Mass
Sister Lucille Wies, OSF

Entrance Hymn

Sing a New Song

D. Schutte



Sing a new song un-to the Lord; let your song be sung from



moun-tains high. Sing a new song un-to the Lord, sing-ing



al - le - lu - ia.

- Verses
1. Shout with glad-ness! Dance for joy!
 2. Rise, O chil-dren, from your sleep;
 3. Glad my soul for I have seen



- | | |
|---------------------------------|----------------------------|
| 1. O come be - fore the Lord. | And play for God on |
| 2. your Sav - ior now has come. | † He has turned your |
| 3. the glo - ry of the Lord. | The trum - pet sounds; the |



- | | |
|------------------------------|-----------------------------|
| 1. glad tam - bou-rines, and | let your trum - pet sound. |
| 2. sor - row to joy, and | filled your soul with song. |
| 3. dead shall be raised. | I know my Sav - ior lives. |

to Refrain

ONE LICENSE A-703611

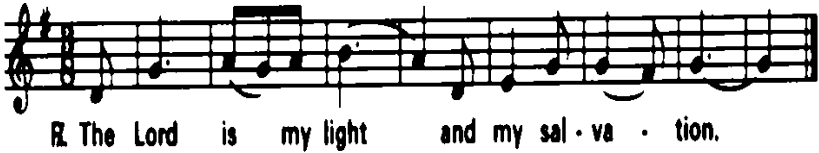
Opening Prayer

Liturgy of the Word

First Reading Wisdom 3:1-6, 9

Responsorial Psalm Psalm 27, The Lord is My Light

Alstott



ONE LICENSE A-703611

Second Reading Romans 8:31b-35, 37-39

Gospel Acclamation

Alleluia, Alleluia, Alleluia

I am the resurrection and the life, **says** the Lord.

Whoever believes in me will **live** forever.

Gospel Matthew 5:1-12a

Homily Father Ed Cook

Prayer of the Faithful

Liturgy of the Eucharist

Preparation of the Altar

Please rise after the Invitation:

*Pray sisters and brothers,
that my sacrifice and yours may be acceptable to God,
the almighty Father*

Presider: The Lord be with you.

All: And with your spirit.

Presider: Lift up your hearts.

All: We lift them up to the Lord.

Presider: Let us give thanks to the Lord our God.

All: It is right and just.

Holy, Holy, Holy

Ho - ly, Ho - ly, Ho - ly Lord God of hosts.
Heav'n and earth are full of your glo - ry. Ho -
san-na, ho - san - na, ho - san-na in the high - est.
Bless-ed is he who comes in the name of the Lord. Ho -
san-na, ho - san - na, ho-san-na in the high - est.---

We Proclaim Your Death, O Lord

We pro-claim your Death, O Lord, and pro-fess your
Res - ur - rec-tion un - til you come a - gain.

Great Amen

A - men, a - men, a - men.

A - men, a - men, a - men.

The image shows two staves of musical notation for the hymn 'Great Amen'. Both staves are in the key of D major (one sharp) and 6/8 time. The melody is simple and repetitive, with the lyrics 'A - men, a - men, a - men.' written below each staff. The first staff ends with a fermata over the final 'men'.

Lamb of God

Cantor
Lamb of God, you take a-way the sins of the world, -
- have mer-cy on us, - - - - - have mer-cy on us. - - - - -

All

Cantor
Lamb of God, you take a-way the sins of the world,
grant us peace, grant us peace,
grant us peace, grant us peace.

All

Cantor
grant us peace, grant us peace.

The image shows five staves of musical notation for the hymn 'Lamb of God'. The key signature is D major (one sharp) and the time signature is 6/8. The first staff is marked 'Cantor' and the second 'All'. The lyrics are: 'Lamb of God, you take a-way the sins of the world, - have mer-cy on us, - - - - - have mer-cy on us. - - - - -'. The third staff is marked 'Cantor' and the fourth 'All'. The lyrics are: 'Lamb of God, you take a-way the sins of the world, grant us peace, grant us peace, grant us peace, grant us peace.'. The fifth staff is marked 'Cantor' and the sixth 'All'. The lyrics are: 'grant us peace, grant us peace.'. The music features a simple, melodic line with some rests and a final cadence.

ONE LICENSE A-703611

Communion Song

Gift of Finest Wheat

Kreutz

Refrain

You sat-is-fy the hun-gry heart With gift of fin-est wheat, Come

give to us, O sav-ing Lord, The bread of life to eat.

- Verses
1. As when the
 2. With joy - ful
 3. Is not the
 4. The mys-t'ry
 5. You give your-

1. shep - herd calls his sheep, They know and heed his voice; So
2. lips we sing to you Our praise and grat - i - tude, That
3. cup we bless and share The blood of Christ out-poured? Do
4. of your pres-ence, Lord, No mor - tal tongue can tell: Whom
5. self to us, O Lord; Then self - less let us be, To

to Refrain

1. when you call your fam-'ly, Lord, We fol - low and re-joice.
2. you should count us wor-thy, Lord, To share this heav'n-ly food.
3. not one cup, one loaf, de-clare Our one-ness in the Lord?
4. all the world can-not con-tain Comes in our hearts to dwell.
5. serve each oth - er in your name In truth and char - i - ty.

ONE LICENSE A-703611

Prayer after Communion

Final Blessing

VERSE 1:

Musical notation for the first line of Verse 1, featuring a treble clef, a key signature of one sharp (F#), and a 4/4 time signature. The melody consists of quarter and eighth notes.

1. You who dwell in the shel-ter of the Lord, who a - bide in his shad-ow for

Musical notation for the second line of Verse 1, continuing the melody from the first line.

1. life, say to the Lord: "My ref-uge, my rock in whom I trust!"

REFRAIN:

Musical notation for the first line of the Refrain, starting with a treble clef, one sharp, and a 4/4 time signature. It includes a fermata over the final note.

And he will raise you up on ea - gle's wings,

Musical notation for the second line of the Refrain, continuing the melody.

bear you on the breath of dawn, make you to shine_ like the
(last time to Coda) to Verses ☩

Musical notation for the third line of the Refrain, including a dynamic marking of *f* (forte) and ending with a fermata.

sun, and hold you in_ the_ palm of his hand.

VERSE 2:

Musical notation for the first line of Verse 2, starting with a treble clef, one sharp, and a 4/4 time signature.

2. The snare of the fowl-er will nev-er cap-ture you, and fam-ine will
to Refrain

Musical notation for the second line of Verse 2, including a triplet of eighth notes marked with a '3' and a slur.

2. bring you no fear: un-der his wings your ref-uge, his faith-ful-ness your shield.

VERSE 3:

3. You need not fear the ter-ror of the night, nor the ar-row that flies by
to Refrain

3. day; though thou-sands fall a-bout you, near you it shall not come.

VERSE 4:

4. For to his an-gels he's giv-en a com-mand to guard you in all of your ways; up
to Refrain

on their hands they will bear you up, lest you dash your foot a-gainst a stone

♠ CODA:

And hold you, hold you in the palm _____ of his hand. _____

ONE LICENSE A-703611

